

ECHOES OF PREHISTORY

Technical File Monumental Vision

**WINDOWS
TO INFINITY**

By Expotour Itinerant

What will the visitor see?

The visitor will peer through a window to discover a diorama that powerfully evokes the prehistoric era. This time, the centerpiece is a grand cave with an underground lake. In the foreground, a massive megalodon bursts from the water, capturing in its jaws a prehistoric bird mid-flight. It's a moment of tension and awe that leads into a vast landscape visible through the cave: towering mountains, smoking volcanoes, and lush vegetation teeming with dinosaurs of all kinds.

Winged creatures soar through the air, while ancient aquatic beings swim in the lake. It's a vibrant scene, until the climax: special effects transform the diorama as the volcanoes erupt, the sky fills with smoke, and the harmony of the dinosaur era is interrupted by the cataclysm that led to their extinction.

Next to this Monumental Vision, a screen projects a video with a renewed narrative on this event, inviting reflection. Visitors can also scan a QR code to access more content available in several languages.

At the end, the message is clear: the extinction of the dinosaurs was a natural event, but today we have the responsibility to care for our planet so as not to provoke our own destruction. It's an exciting experience that delights children and leaves an imprint of environmental awareness on all visitors.



OWS FINITY

Echoes of Prehistory

More than 150 million years ago, Earth was dominated by dinosaurs. It was an era of giants: pterosaurs flew over vast skies, while the fearsome Tyrannosaurus rex, Triceratops, and Brachiosaurus roamed through dense jungles and ancient plains.

In the oceans, creatures like the Mosasaurus ruled with ferocity. But this era of splendor came to an end; 66 million years ago, the planet suffered the impact of a colossal meteorite.

The sky darkened with ash, temperatures dropped, and in a short time, 75% of the planet's species disappeared. Today, though they no longer exist, their history lives on in fossils, reminding us of something vital: life on Earth is fragile.

Their extinction invites us to reflect on our present and future. Caring for our world is the most important legacy we can honor.





FURIA

Furia is the undisputed king of prehistory. His staggering size and brute strength make him the most feared predator in the ecosystem. Although his nature is fierce, Furia is a clever hunter who uses both his intelligence and physical power. With a roar that shakes the ground, Furia is the unstoppable force of the group, always ready to defend his territory and his pack with fearsome combativeness.



TOR

Tor is a brave warrior and the protector of the group. With his imposing head-shield and his three sharp horns, he is in charge of safeguarding his friends from any threat. Strong and loyal, he isn't afraid to face predators even if they are much larger than him. His tenacity and bravery make him a valuable ally, and although his appearance is rugged, he has a noble and faithful heart.



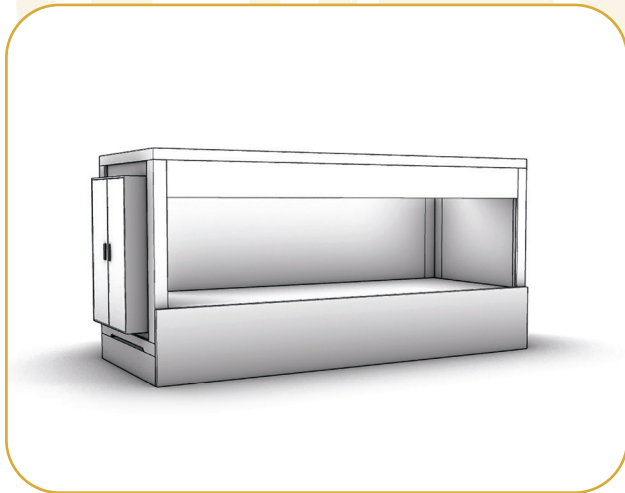
GIGANTE

Gigante is the serene colossus of the group. With his long neck and enormous size, he is one of the most majestic animals of prehistory. Despite his massive body, Gigante is peaceful and enjoys the tranquility of the vast plains where he feeds. His calm nature and his wisdom make him the stable pillar of the group, always offering a collected perspective in the face of chaos.

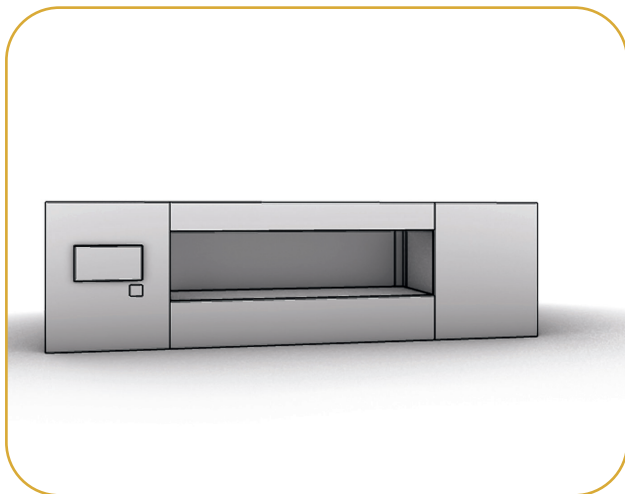


Edition The Experience:

Large containers designed exclusively for ample exhibition spaces that have wide doors and sufficient logistical capacity.



The Experience | Basic module



The Experience | Complete module

Technical Specifications

Module dimensions	6x2,40x2,70 m
Total height with bases	3,10 m
Panel dimensions	2x0,06x3,10 m
Total surface area	10x3,40 m
Total weight	900 kg
Weight per m ²	200 kg
Electrical power	3 Kw
Automation	Included

DMX LED lights	Included
Amplified audio	Included
Screen	External included
Graphics	2x3,10 m
Front sign	Included
QR code plate	Included
Smoke extraction	Necessary
Water and drainage	No

Special Effects

Wind	Included
Lightning	Included
Storm	No
Waves	No
Natural water	No
Waterfalls	No
Rain	No

Holograms	No
Moving objects	No
Fire	Included
Changing lights	Included
Fog	Included
Approx. N° figures	200

Technical Accompaniment

Audio guide	Included
Video guide	Included
Music	Included
Video	Included
QR codes	Included
Travel guide	Included

Artistic Accompaniment

Characters	Included
Narrative	Included
Final messages	Included
Author's opinion	Included
Critical opinion	Included

Suitable for:

Children	Yes
Adolescents	Yes
Young adults	Yes

Middle age	Yes
Seniors	Yes

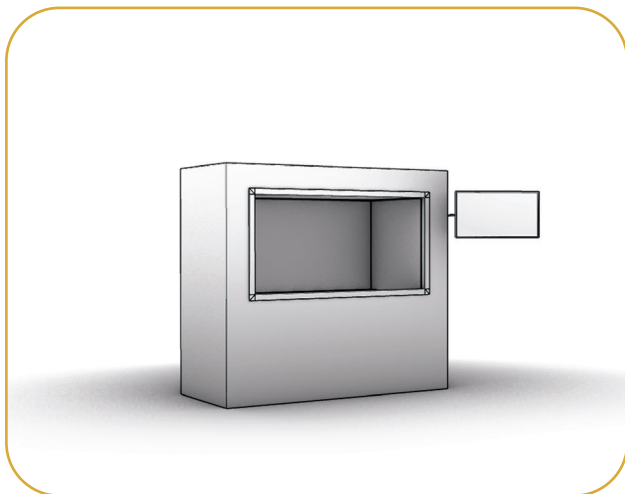


Edition The Essence:

A compact module made up of reduced-size containers and foldable structures that can adapt to any kind of room with doors measuring 1.20x2.10 m.



The Essence I Basic module



The Essence I Complete module

Technical Specifications

Module dimensions	2,60x1,20x2 m	DMX LED lights	Included
Total height with bases	2,40 m	Amplified audio	Included
Total surface area	2,60x2,40 m	Screen	External included
Total weight	900 kg	Graphics	2x3,10 m
Weight per m ²	200 kg	Front sign	Included
Electrical power	3 Kw	QR code plate	Included
Automation	Included	Smoke extraction	Necessary
		Water and drainage	No

Special Effects

Wind	Included	Holograms	No
Lightning	Included	Moving objects	No
Storm	No	Fire	Included
Waves	No	Changing lights	Included
Natural water	No	Fog	Included
Waterfalls	No	Approx. N° figures	200
Rain	No		

Technical Accompaniment

Audio guide	Included
Video guide	Included
Music	Included
Video	Included
QR codes	Included
Travel guide	Included

Artistic Accompaniment

Characters	Included
Narrative	Included
Final messages	Included
Author's opinion	Included
Critical opinion	Included

Suitable for:

Children	Yes	Middle age	Yes
Adolescents	Yes	Seniors	Yes
Young adults	Yes		



WINDOWS TO INFINITY

www.expotouritinerant.com
info@expotouritinerant.com