

A SUSTAINABLE JOURNEY

Technical File Monumental Vision

WINDOWS TO INFINITY

By Expotour Itinerant

What will the visitor see?

The visitor will peer through a window to discover a diorama that celebrates the sustainable majesty of our planet. In the background, the Earth is depicted in a detailed relief, featuring mountains, glaciers, savannahs, and deserts. In total, there are more than 350 hand-painted animal figures: from polar bears in the Arctic to lions and elephants in the savannah.

Waterfalls spring from the planet and flow into wetlands filled with birds, before cascading into a vibrant ocean teeming with fish in every color. More than 6,000 light points illuminate the walls, ceiling, and backgrounds, highlighting the world's major cities and creating an unforgettable visual spectacle.

At the end of the story, the visitor will receive a powerful message full of values that invite to reflect deeply on the importance of sustainability. Altogether, the entire experience becomes an immersive journey combining art, spectacle, and technology, leaving an indelible mark.



OWS FINITY

A Sustainable Journey

Earth is a vibrant planet; a mosaic of interconnected ecosystems where life flourishes in countless forms. From the majestic mountain peaks to the serene wetlands, each landscape tells a unique story of evolution and adaptation.

Up high, mountaintops shelter species that endure extreme conditions. Lower down, the grasslands sway with the wind, providing shelter to herds, predators, and insects. The wetlands, where fresh and saltwater mix, overflow with biodiversity, while the oceans unfold an underwater universe full of color and mystery.

Above all, birds connect these habitats by migrating thousands of miles, reminding us that everything on the planet is interconnected.

The Earth is a living, complex, and delicate organism, of which we are all part. Its balance depends on every living being, and it is our responsibility to protect it so that future generations can also marvel at its beauty and vast mystery.





GRIZZLY

Grizzly is the calm and sturdy member of the group. Strong and dependable, he is always ready to face any challenge with calm and determination. Although he may seem solitary, he has a kind and protective heart, especially towards the youngest members of the group. Grizzly enjoys peaceful moments, but does not hesitate to use his strength when the situation demands it.



TROMPITAS

Trompitas is the wise and protective one in the group. With his enormous size and strength, he is always ready to help others in times of need. Although he commands respect, his friendly and serene character makes him the advisor of the expedition. His trunk is his most versatile tool, which he uses both to solve problems and to entertain his companions.



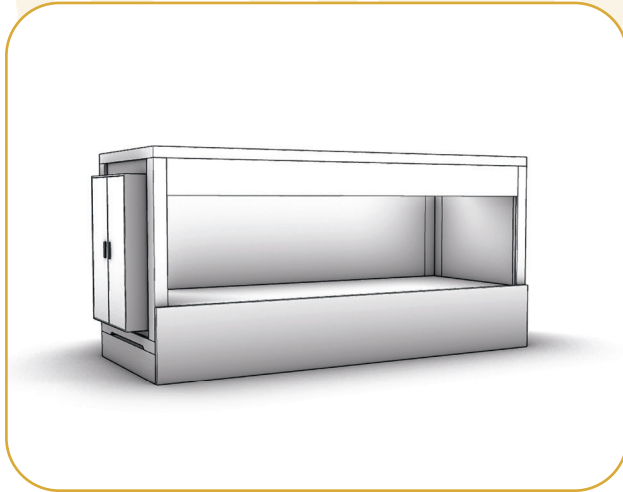
MELENUDO

Melenudo is the natural leader of the group, known for his bravery and decisiveness. With his majestic mane and fierce gaze, he inspires confidence and respect in everyone. While he can sometimes be reckless, he always seeks to protect his companions and lead the group to success. His powerful roar is a symbol of strength and courage.

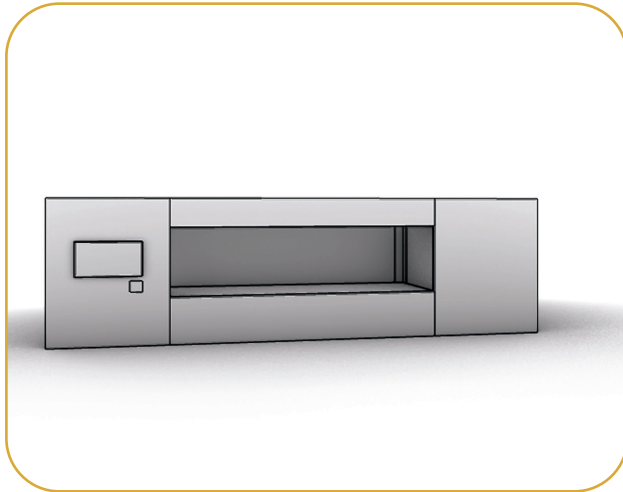


Edition **The Experience**:

Large containers designed exclusively for ample exhibition spaces that have wide doors and sufficient logistical capacity.



The Experience | Basic module



The Experience | Complete module

Technical Specifications

Module dimensions	6x2,40x2,70 m
Total height with bases	3,10 m
Panel dimensions	2x0,06x3,10 m
Total surface area	10x3,40 m
Total weight	900 kg + 200 kg (Water)
Weight per m ²	200 kg
Electrical power	3 Kw
Automation	Included

DMX LED lights	Included
Amplified audio	Included
Screen	External included
Graphics	2x3,10 m
Front sign	Included
QR code plate	Included
Smoke extraction	No
Water and drainage	Necessary

Special Effects

Wind	No
Lightning	No
Storm	No
Waves	No
Natural water	Included
Waterfalls	Included
Rain	No

Holograms	No
Moving objects	No
Fire	No
Changing lights	Included
Fog	No
Approx. N° figures	200

Technical Accompaniment

Audio guide	Included
Video guide	Included
Music	Included
Video	Included
QR codes	Included
Travel guide	Included

Artistic Accompaniment

Characters	Included
Narrative	Included
Final messages	Included
Author's opinion	Included
Critical opinion	Included

Suitable for:

Children	Yes
Adolescents	Yes
Young adults	Yes

Middle age	Yes
Seniors	Yes

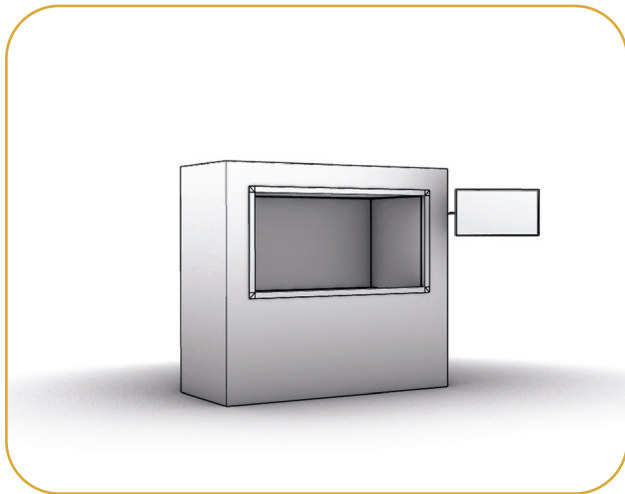


Edition The Essence:

A compact module made up of reduced-size containers and foldable structures that can adapt to any kind of room with doors measuring 1.20x2.10 m.



The Essence I Basic module



The Essence I Complete module

Technical Specifications

Module dimensions	2,60x1,20x2 m
Total height with bases	2,40 m
Total surface area	2,60x2,40 m
Total weight	900 kg + 200 kg (water)
Weight per m ²	200 kg
Electrical power	3 Kw
Automation	Included

DMX LED lights	Included
Amplified audio	Included
Screen	External included
Graphics	2x3,10 m
Front sign	Included
QR code plate	Included
Smoke extraction	No
Water and drainage	Necessary

Special Effects

Wind	No
Lightning	No
Storm	No
Waves	No
Natural water	Included
Waterfalls	Included
Rain	No

Holograms	No
Moving objects	No
Fire	No
Changing lights	Included
Fog	No
Approx. N° figures	200

Technical Accompaniment

Audio guide	Included
Video guide	Included
Music	Included
Video	Included
QR codes	Included
Travel guide	Included

Artistic Accompaniment

Characters	Included
Narrative	Included
Final messages	Included
Author's opinion	Included
Critical opinion	Included

Suitable for:

Children	Yes
Adolescents	Yes
Young adults	Yes

Middle age	Yes
Seniors	Yes



WINDOWS TO INFINITY

www.expotouritinerant.com
info@expotouritinerant.com